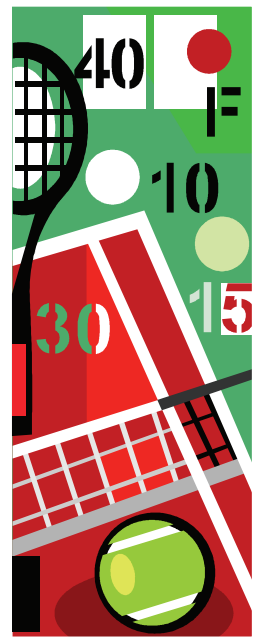
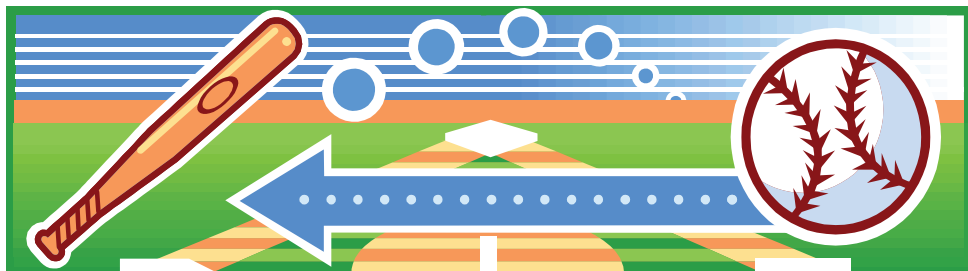


THE CITY OF
St. Albert



ATHLETIC FIELDS

City of St. Albert Athletic Fields

The City of St. Albert provides recreational opportunities on city-owned sport fields for the following groups:

- St. Albert Soccer Association
- St. Albert Minor Baseball Association
- St. Albert Ladies Recreational Fastball
- St. Albert Track & Field Club
- St. Albert Minor Football Association
- Fastball St. Albert
- St. Albert Tigers
- Special Olympics St. Albert

Public sports fields are maintained by the City of St. Albert Public Works Department. Premier athletic fields are maintained by local sport organizations including:

RUGBY

- **St. Albert Rugby Football Club**
51 Riel Drive
4 Fields

SOCCER

- **St. Albert Soccer Association**
61 Riel Drive
4 Fields

Ball Diamonds

- **St. Albert Men's Slo-Pitch Association**
Meadowview Park off Mission Avenue
4 Fields
- **Legion Ball Diamonds**
215 Sturgeon Road
4 Fields



Soccer Field Locations

- **Albert Lacombe, off Gainsborough Avenue**
3 mini size fields, behind Albert Lacombe School
- **Alpine Park, off Akins Drive & Alpine Boulevard**
1 full-size field, 1 mid size field by Elmer Gish
- **Attwood Park, off Attwood Drive & Arlington Drive**
1 full size field, 1 mid size field
- **Bellerose Park, off Giroux Road**
1 full size field, behind Bellerose Composite High School
- **Deer Ridge Park, off Deer Ridge Drive**
1 mid size, 1 mini size field, behind Muriel Martin School
- **Dorchester Park, off Deer Ridge Drive**
1 mid size field, behind J.J. Nearing School
- **Eldorado Park, off Erin Ridge Drive & Eldorado Drive**
2 full sized, 1 mid size fields
- **Fountain Park, off Sir Winston Churchill Avenue**
1 full size fields, beside Lorne Akins School
- **Forest Park, off Forest Drive**
2 full size fields
- **Fowler Park, off Sir Winston Churchill Avenue**
1 full size field, beside Sir Alexander Mackenzie School
- **Gatewood Park, off Gatewood Drive**
1 full size field, 1 mini field, behind Wildrose School
- **Gloucester Park, on Gloucester Drive**
1 full size field
- **Grosvenor Park, off Grosvenor Boulevard**
1 full size field, 1 mid size field, behind Robert Rundle School
- **Hodgson Park, off Heritage Drive**
1 mid size field
- **Langholm Park, on Liberton Drive**
1 mid size field
- **Langley Park, off Langley Avenue**
1 full size field, behind Ronald Harvey School
- **Larose Park, off Larose Drive**
1 full size field, behind Bertha Kennedy School
- **Leo Nickerson, off Sycamore Avenue**
1 mid size field, behind Leo Nickerson School
- **Pineview Park, off Pineview Drive**
1 mid size field
- **Poplar Park, off Sir Winston Churchill Avenue**
1 full size field, behind Margeurite D'Youville School
- **Salisbury Park, on Salisbury Avenue**
2 full size fields, 3 mini fields, behind Vital Grandin School
- **St. Albert High, off Malmo Avenue**
1 full size field, behind St. Albert High School
- **Willoughby Park off Willoughby Drive**
1 full size field, 2 mini fields behind Keenooshayo School

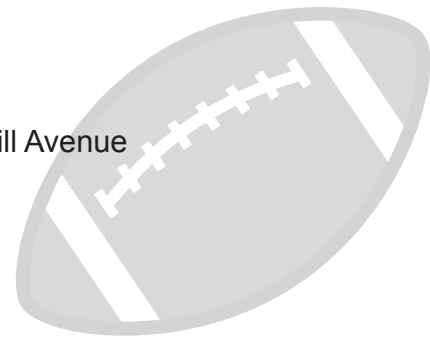


Call 780-459-1568 for recorded information & field closures.
Go to www.stalbert.ca for current maps.

Football Field Locations

- Alpine Park, off Alpine Boulevard
- Bellerose Park, off Giroux Road
- Langley Park, off Langley Avenue

- Larose Park, off Larose Drive
- Gatewood Park, off Gatewood Drive
- Fountain Park, off Sir Winston Churchill Avenue



Riel Recreation Park

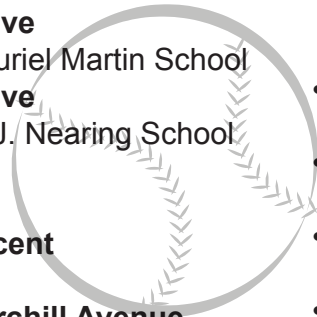
- #10, 47 Riel Drive
1 Artificial Turf field

Fowler Athletic Park

The Fowler Athletic Park is a legacy from the 1979 Albert Summer Games that was hosted by the City of St. Albert. A number of additions have been made to the track site since 1979 and the facility is home to the St. Albert Track and Field Club. During the months of April, May and June many of St. Albert's school children make use of the track. The park is named in honour of former St. Albert Mayor, Richard S. Fowler. Fowler Park is located on Sir Winston Churchill Avenue.

Baseball Diamond Locations

- **Albert Lacombe, on Gainsborough Avenue**
1 small shale, behind Albert Lacombe School
- **Alpine Park, off Akins Drive & Alpine Boulevard**
1 mid size shale, beside Elmer S. Gish School
- **Bellerose Park, off Giroux Road**
1 full size shale, behind Bellerose High School
- **Deer Ridge Park, off Deer Ridge Drive**
1 mid size, shale baselines, behind Muriel Martin School
- **Dorchester Park, off Deer Ridge Drive**
1 mid size, shale baselines, behind J.J. Nearing School
- **Erindale Park, on Erin Ridge Drive**
1 full size, shale baselines
- **Flagstone Park, on Flagstone Crescent**
1 mid size shale
- **Fountain Park, off Sir Winston Churchill Avenue**
1 full size shale, 2 mid size shale, 1 small shale
- **Fowler Park, off Sir Winston Churchill Avenue**
1 mid size, behind R.S. Fowler School
- **Gatewood Park, on Gatewood Avenue**
1 small shale
- **Grosvenor Park, on Grosvenor Boulevard**
2 small shale, by Robert Rundle School
- **Langholm Park, on Liberton Drive**
1 small T-ball, grass
- **Langley Park, off Langley Avenue**
4 small T-ball, grass, by Ronald Harvey School
- **Larose Park, off Larose Drive**
1 mid size shale baselines, behind W.D. Cuts School & 1 mid size grass behind Bertha Kennedy School
- **Legion Park, on Sturgeon Road**
2 large shale, 2 mid-size shale
- **Lions Park, off Sir Winston Churchill Avenue**
1 mid size shale
- **Meadowview Park, on Meadowview Drive**
4 full size, slo pitch
- **Mission Park, off Mission Avenue**
1 mid size shale, by Ecole Father Jan
- **Poplar Park, off Park Avenue**
1 small shale baselines
- **Salisbury Park, off Salisbury Avenue**
1 mid size shale behind Vital Grandin School
- **Willoughby Park on Willoughby Drive**
1 full size, shale baselines behind Neil M. Ross School



TENNIS COURTS

The St. Albert Tennis Club provides tennis lessons for the community at the Mission courts and clubhouse. The Public Works Department maintains all city tennis courts. Under the terms of the Joint Use Agreement, schools have first priority on the tennis courts during the school day. During the evenings and weekends, tennis courts are available on a first come first serve basis. Courts are located at these addresses:

- **Akinsdale, 36 Alpine Boulevard** - 2 Courts
- **Bellerose/Deer Ridge, Giroux Road**
2 Courts - behind Bellerose High School
- **Fountain Park, 4 Cunningham Road** - 2 Courts
- **Ironwood, 51 Ironwood Drive** - 2 Courts
- **Lacombe, 139 Larose Drive** - 2 Courts
- **Willoughby, 4 Willoughby Drive** - 2 Courts
- **Mission, 9 Mission Avenue** - 4 Courts
- **Gloucester, Gloucester Drive** - 2 Courts



Call 780-459-1568 for recorded information & field closures.
Go to www.stalbert.ca for current maps.

