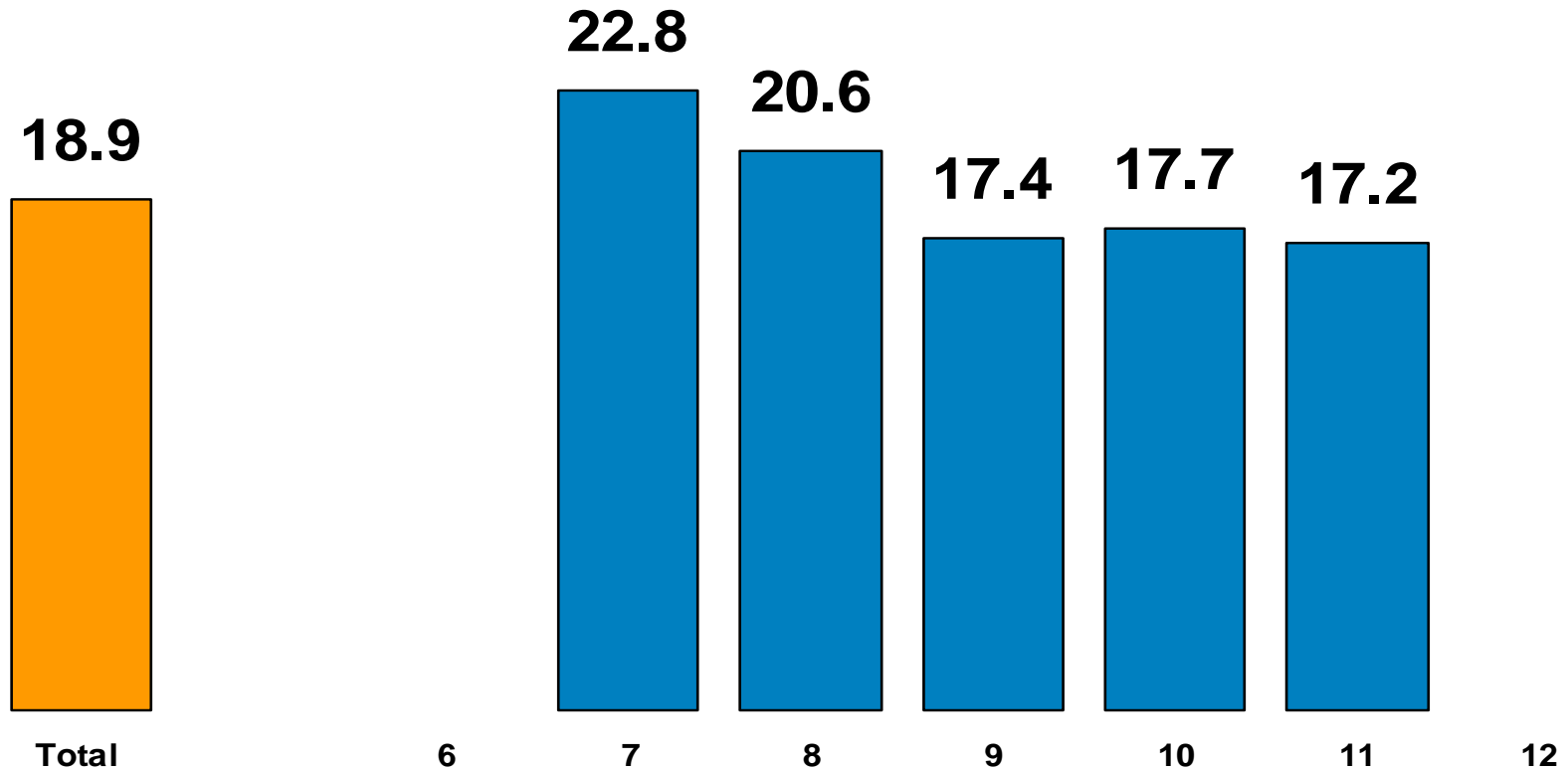


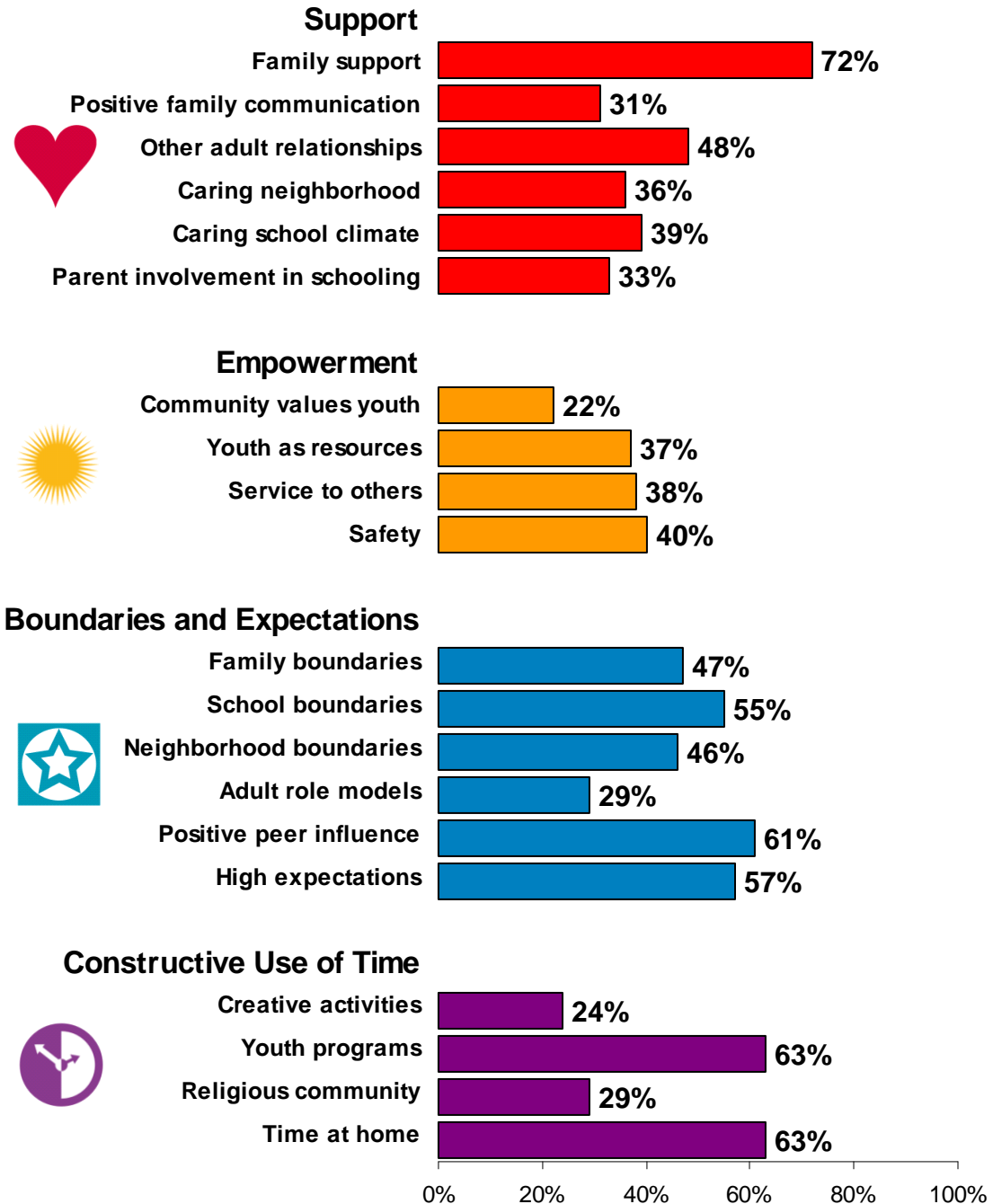
The **Average** Number of **Assets** Your Youth Report

(Figure 5 from your Full Report)

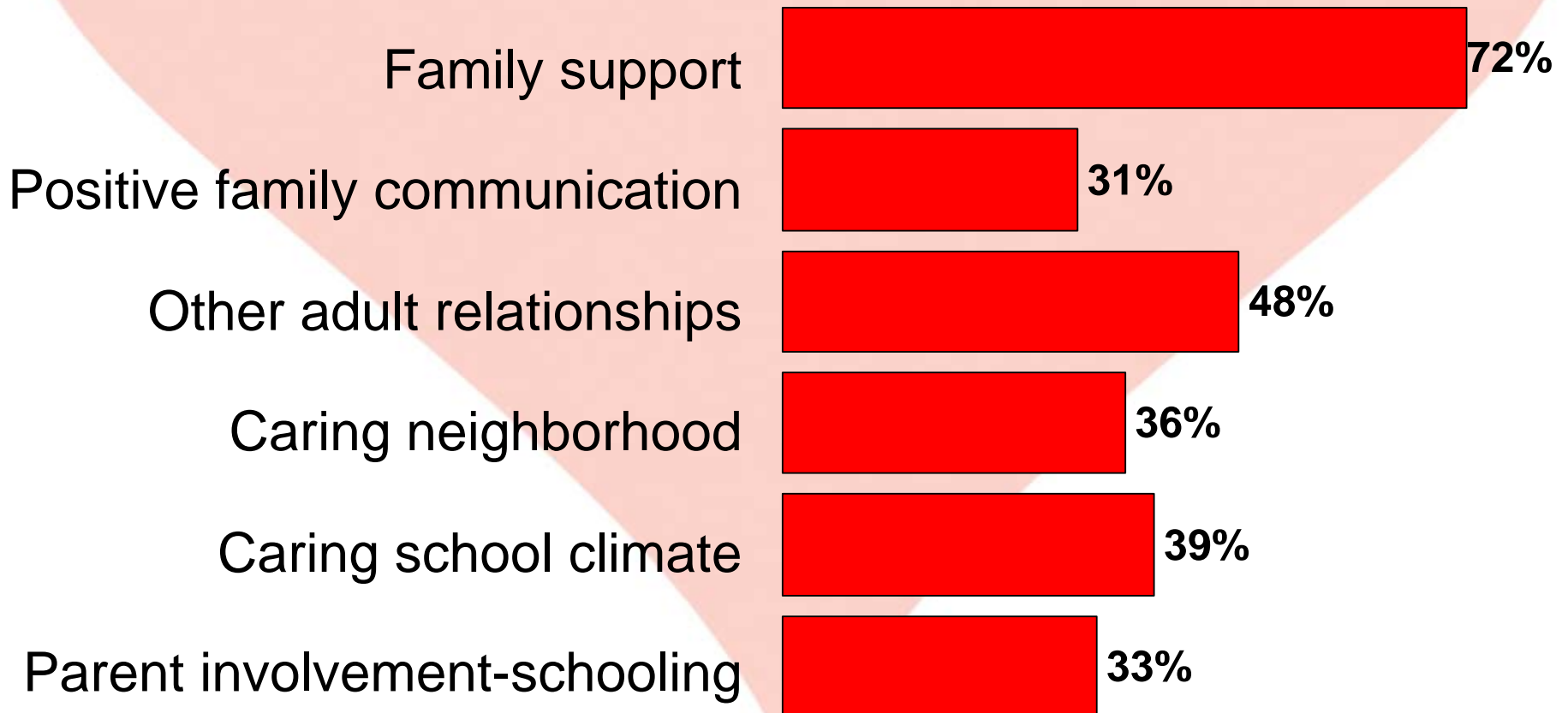


Percent of Youth Reporting Each of 20 External Assets

(Figure 6 from your Full Report)



The Support Assets - Percentages Your Youth Report



The **Empowerment** Assets - Percentages Your Youth Report

Community values youth



22%

Youth as resources



37%

Service to others



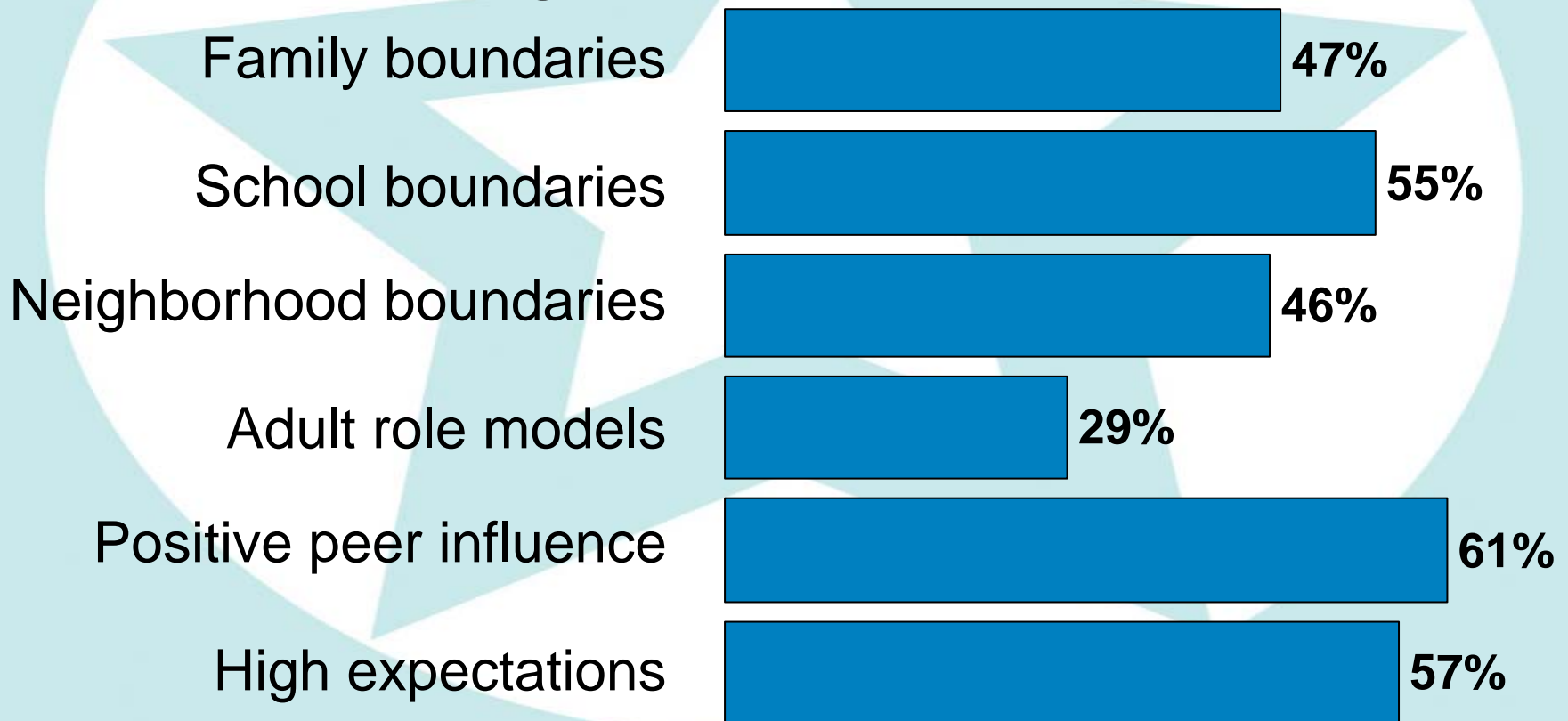
38%

Safety

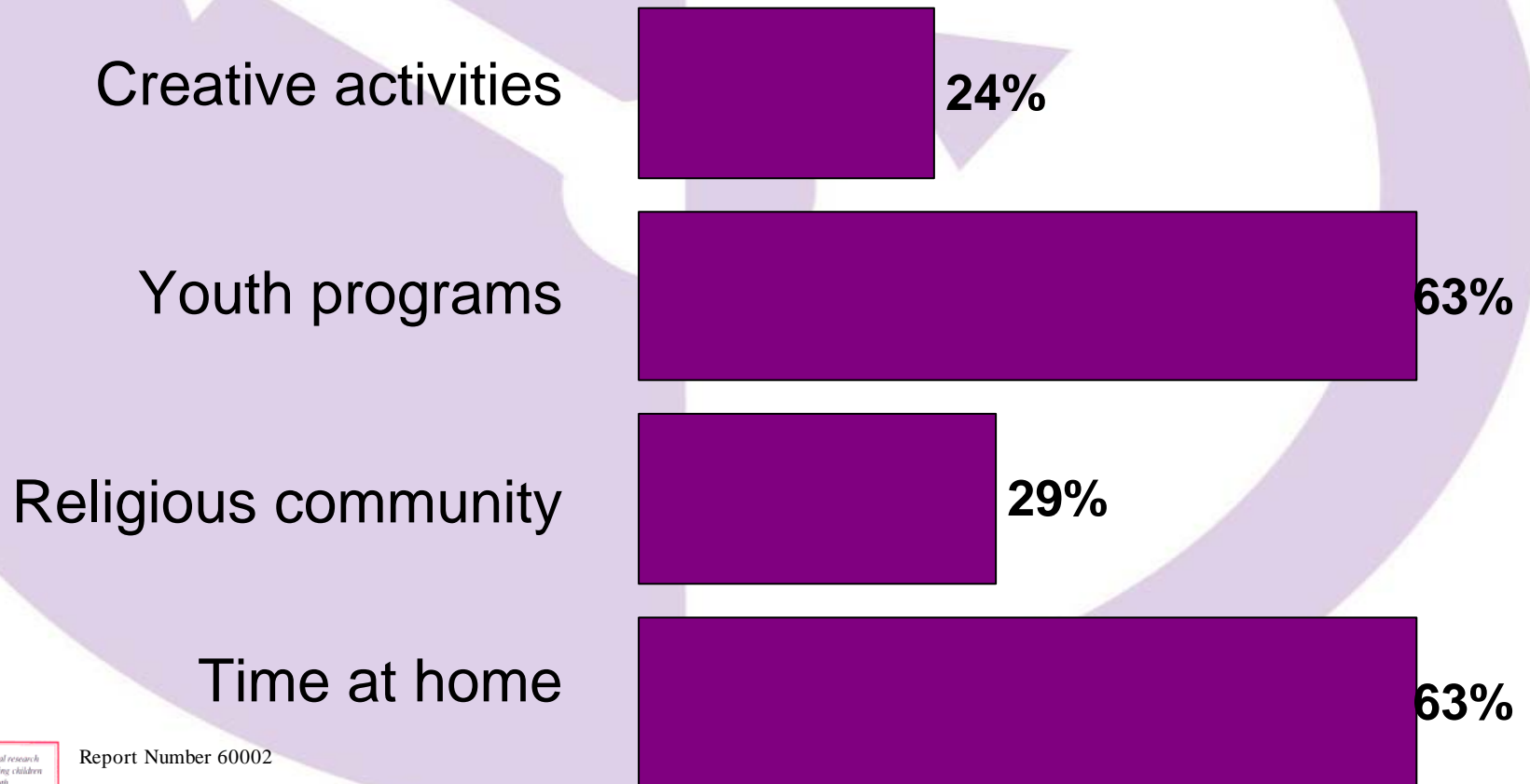


40%

The Boundaries and Expectations Assets - Percentages Your Youth Report

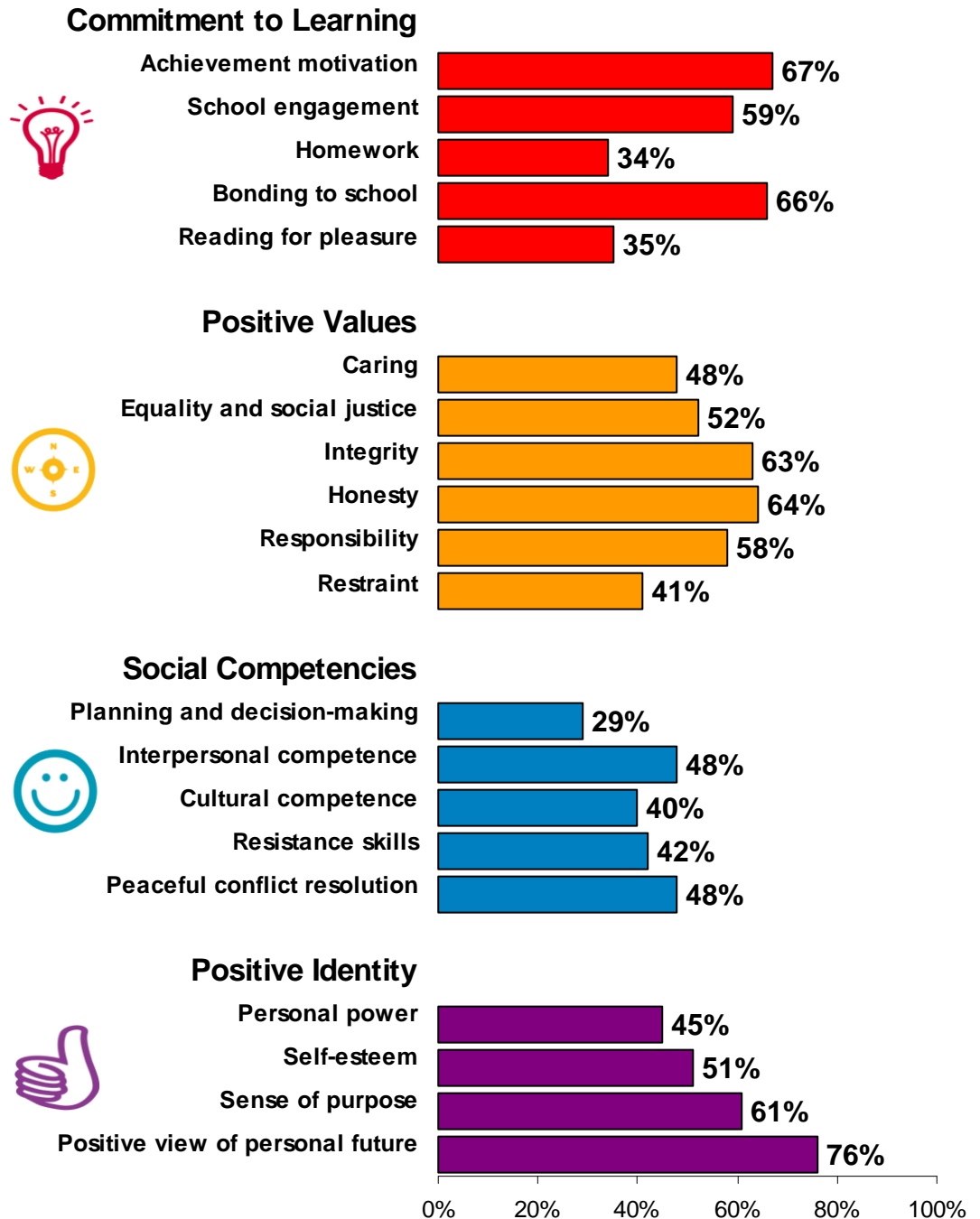


The Constructive Use of Time Assets - Percentages Your Youth Report



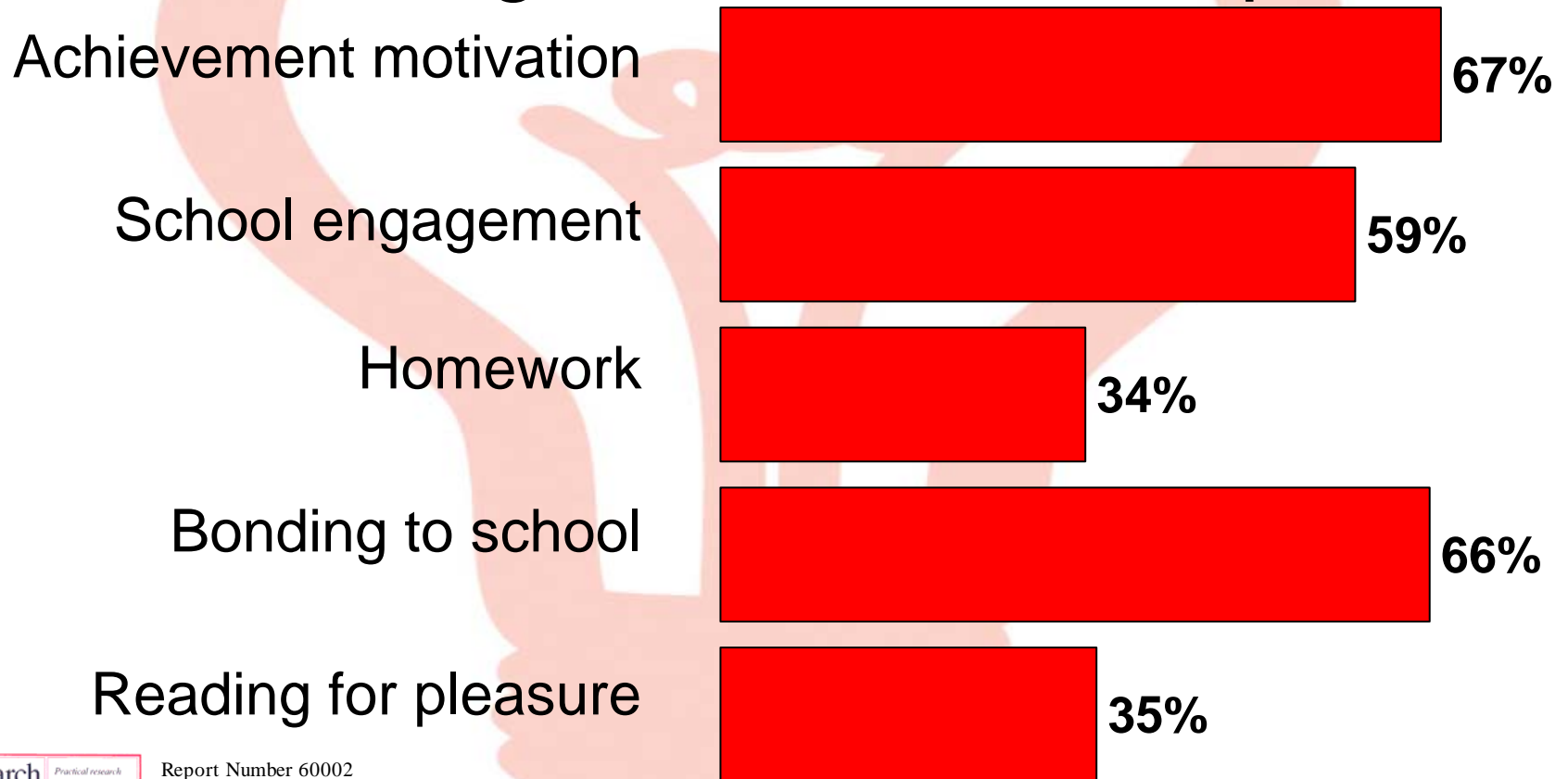
Percent of Your Youth Reporting Each of 20 Internal Assets

(Figure 7 from your Full Report)

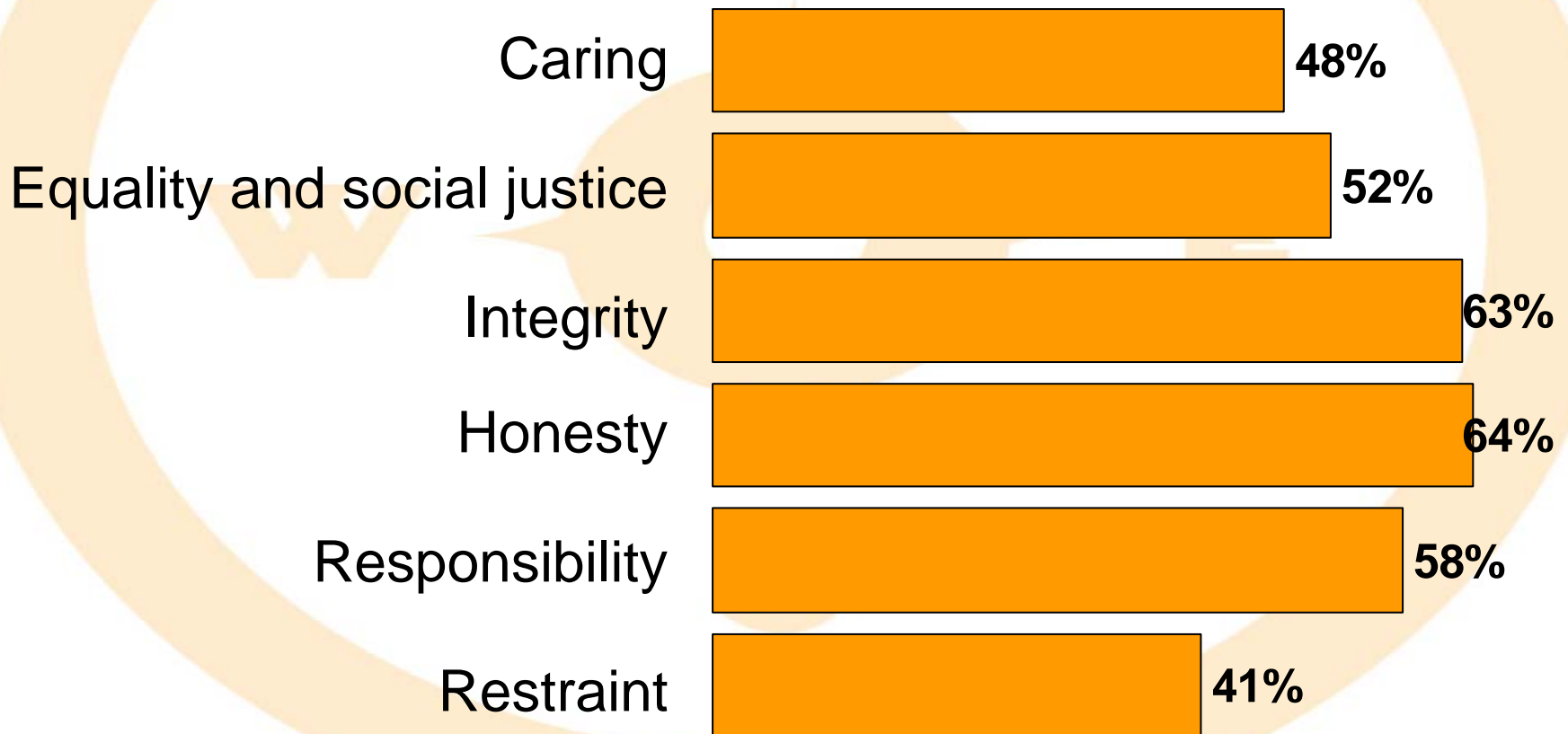


The Commitment to Learning Assets -

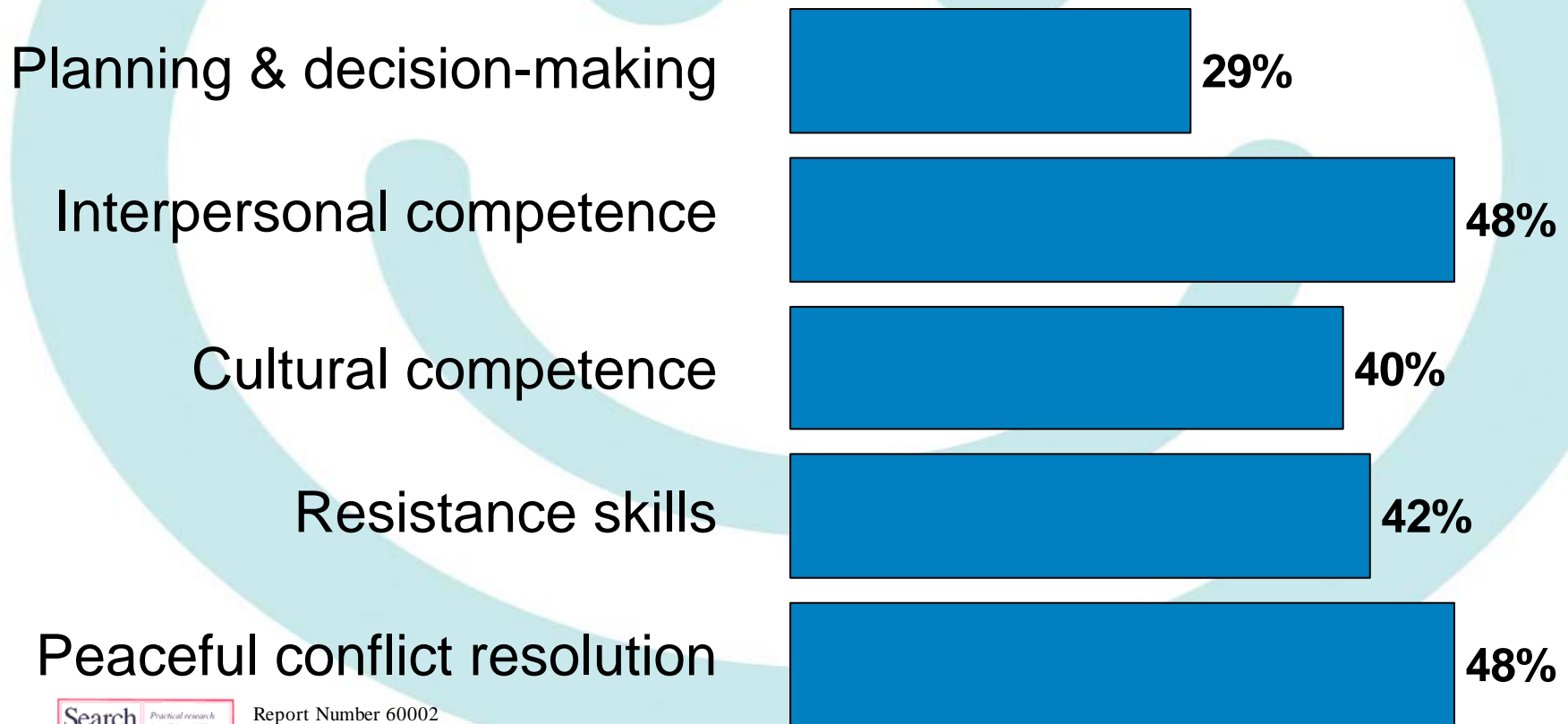
Percentages Your Youth Report



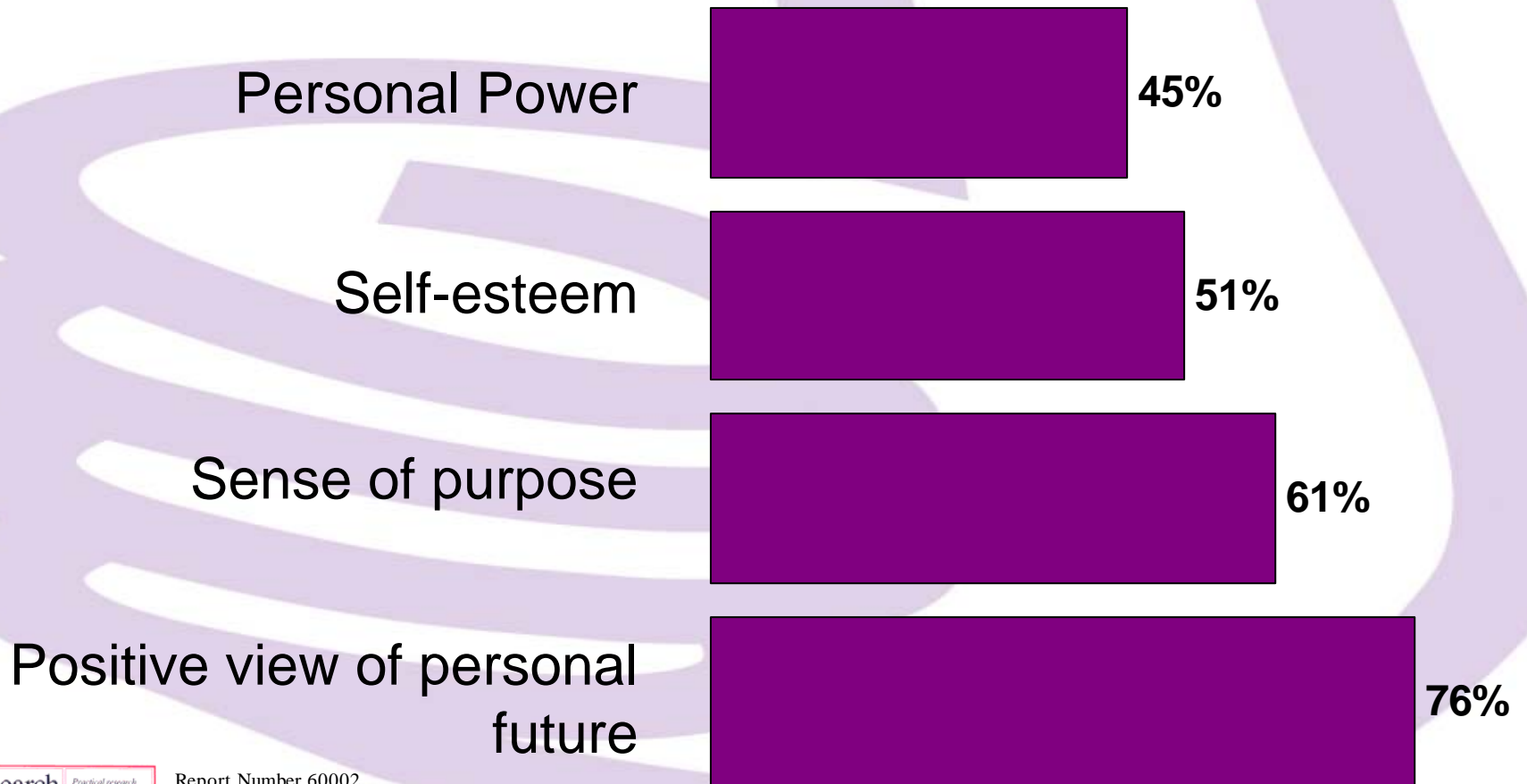
The **Positive Values** Assets - Percentages Your Youth Report



The Social Competencies Assets - Percentages Your Youth Report

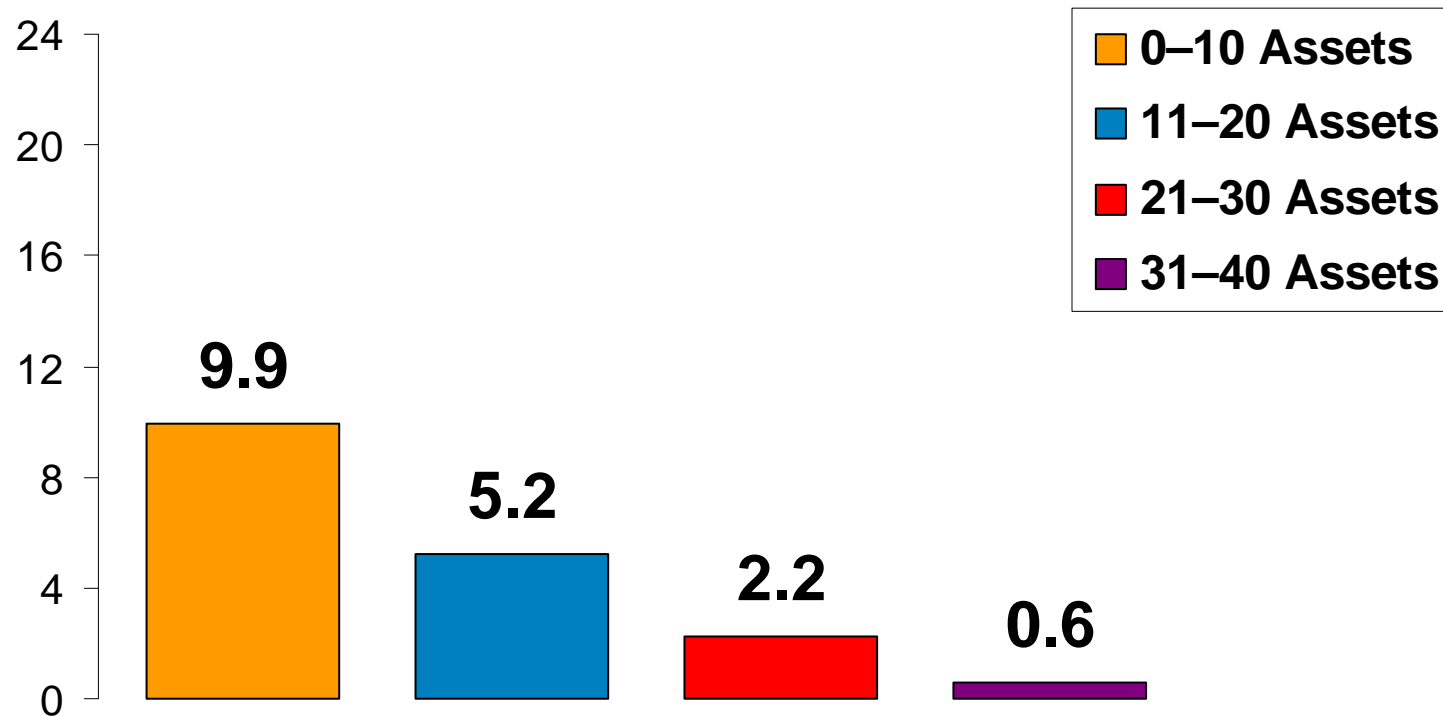


The **Positive Identity** Assets - Percentages Your Youth Report



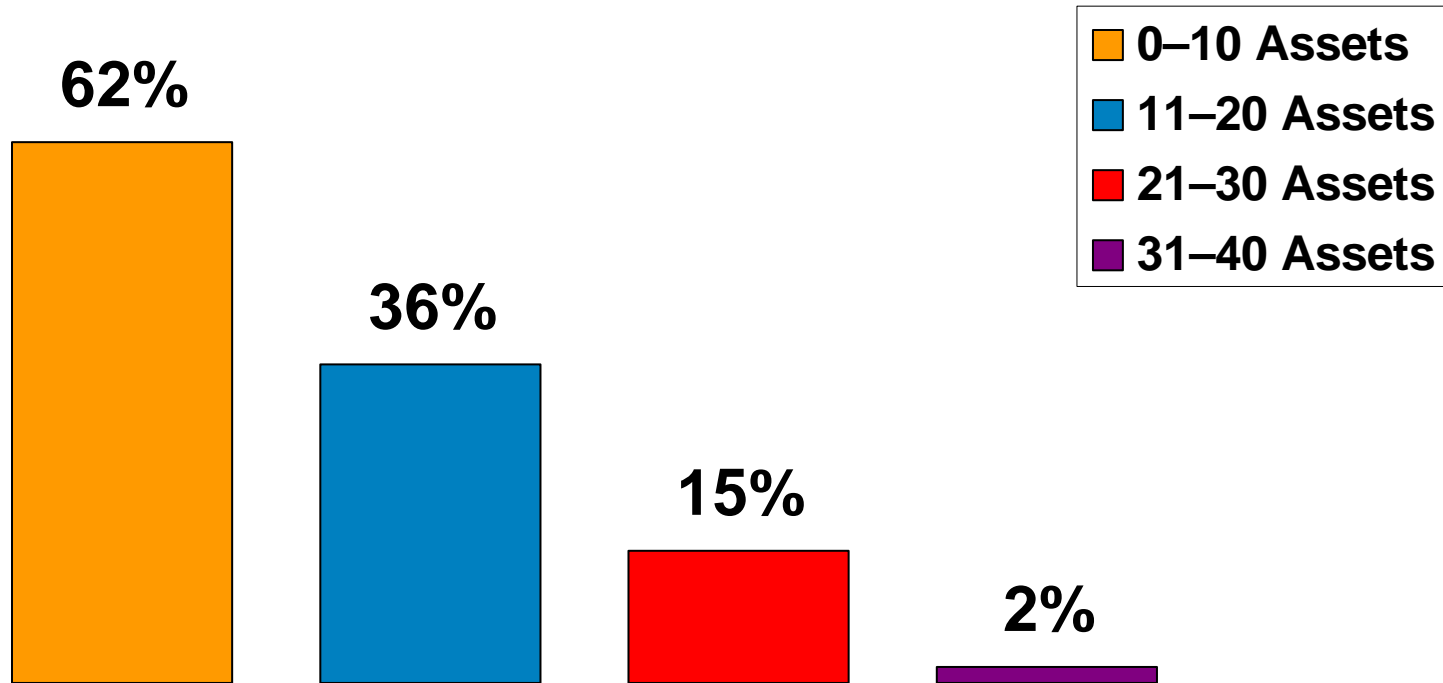
The Average Number of Risk-Taking Behaviors

(Figure 9 from your Full Report)



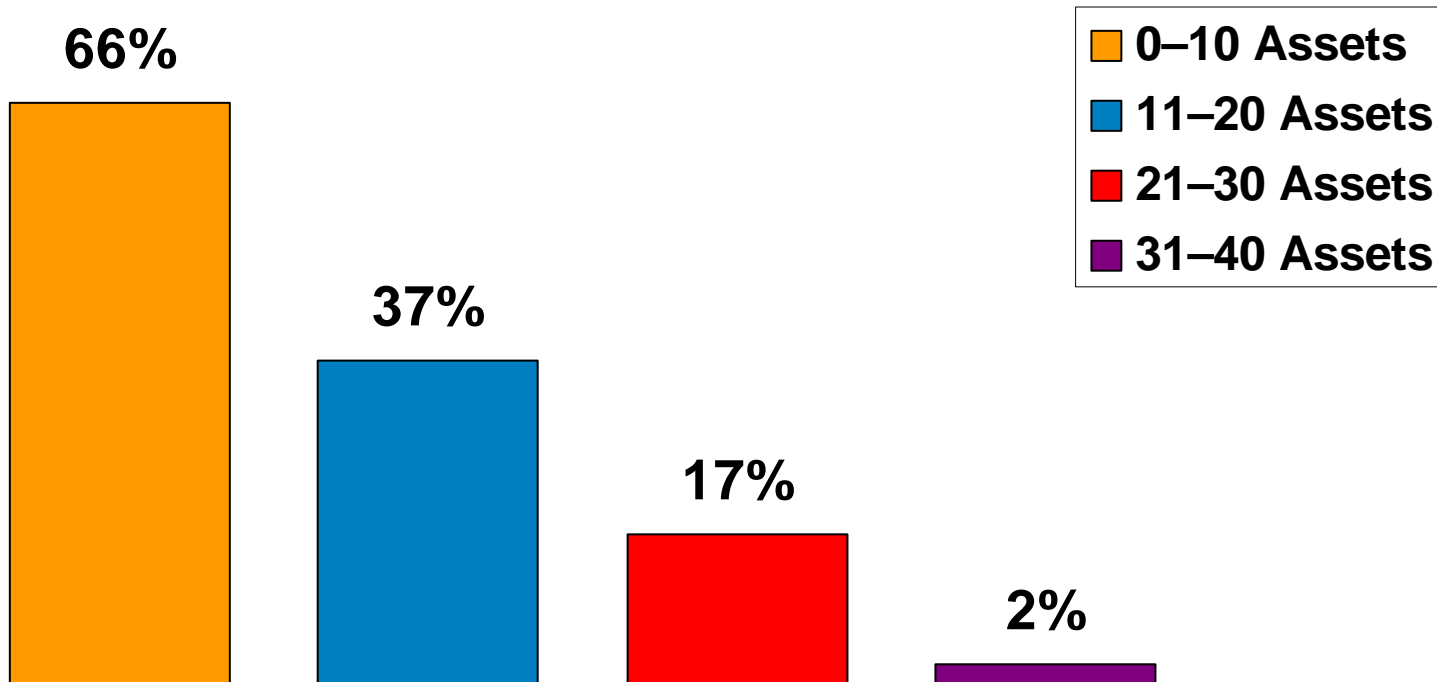
The Power of Assets to Protect: Problem Alcohol Use

(from Table 19 of your Full Report)



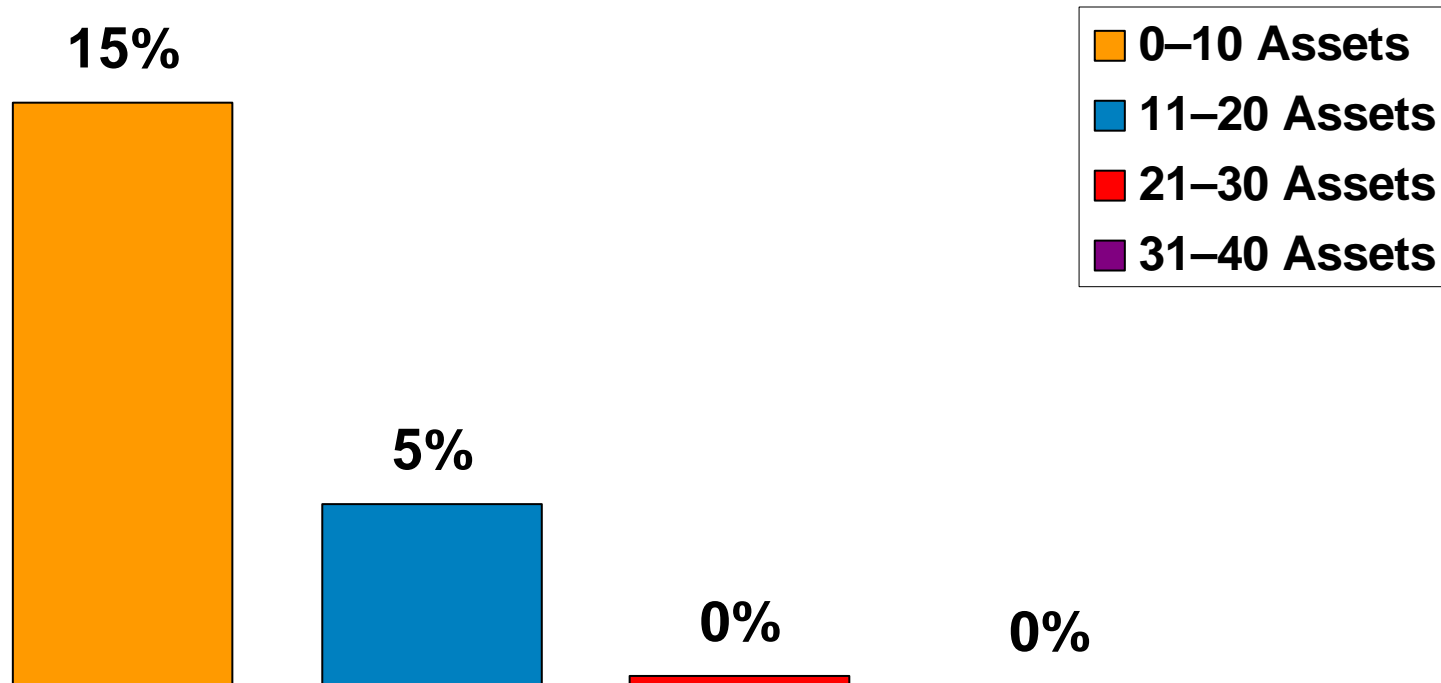
The Power of Assets to Protect: Violence

(from Table 19 of your Full Report)



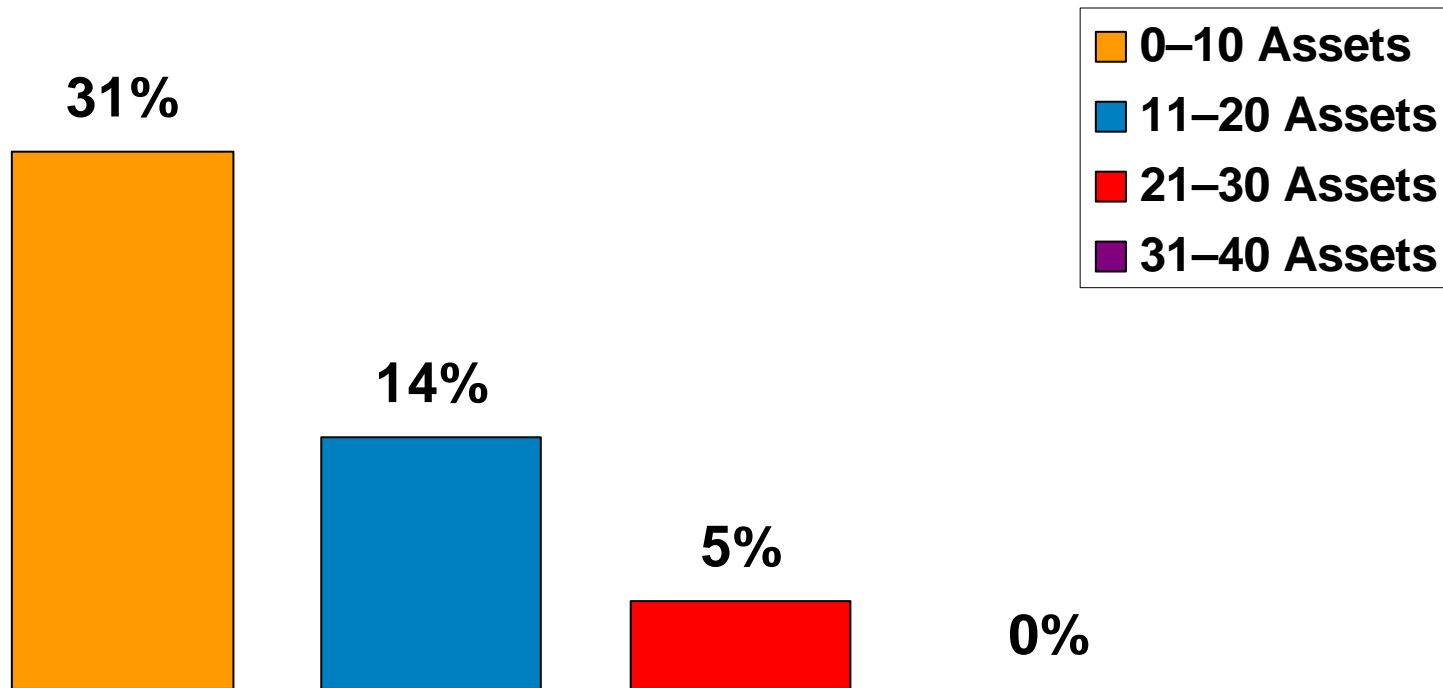
The Power of Assets to Protect: Illicit Drug Use

(from Table 19 of your Full Report)



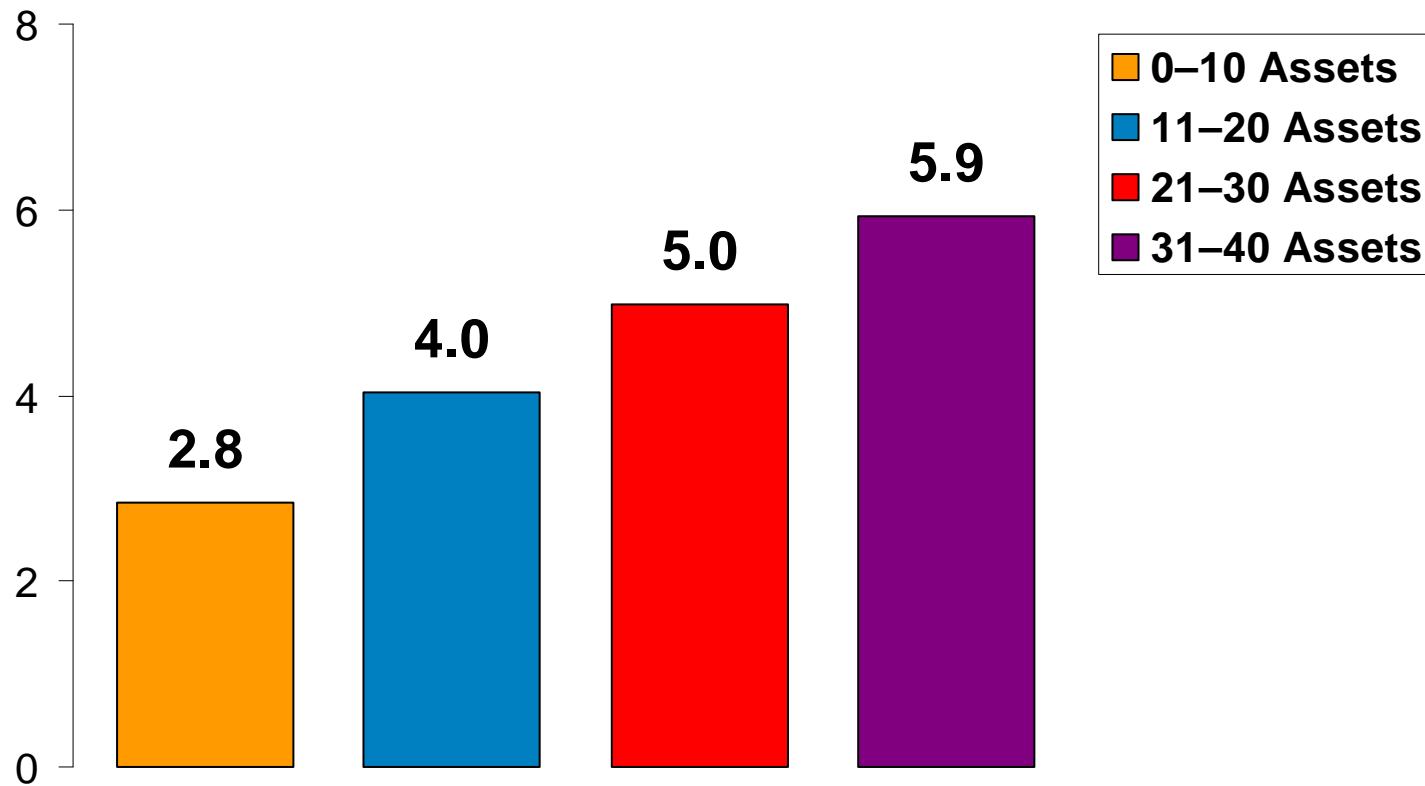
The Power of Assets to Protect: Sexual Activity

(from Table 19 of your Full Report)



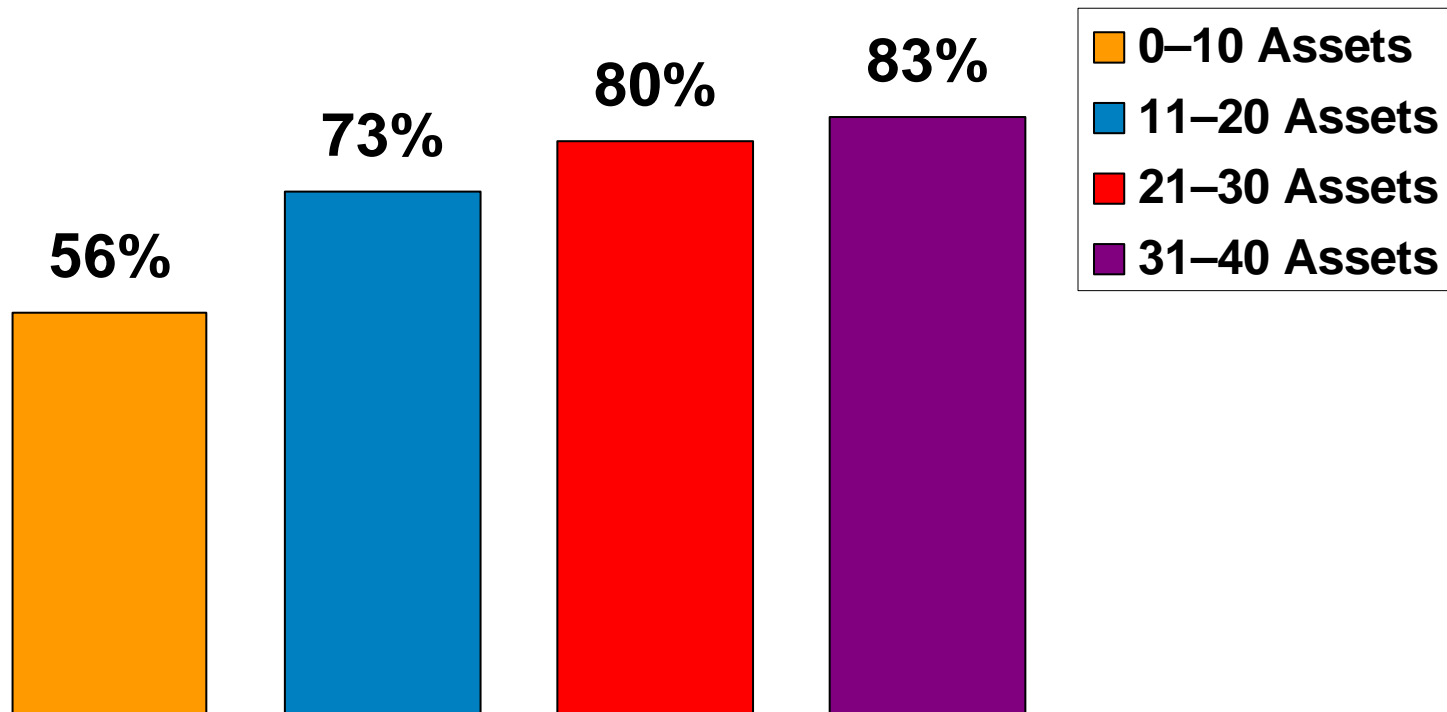
The Average Number of Thriving Indicators

(Figure 8 from your Full Report)



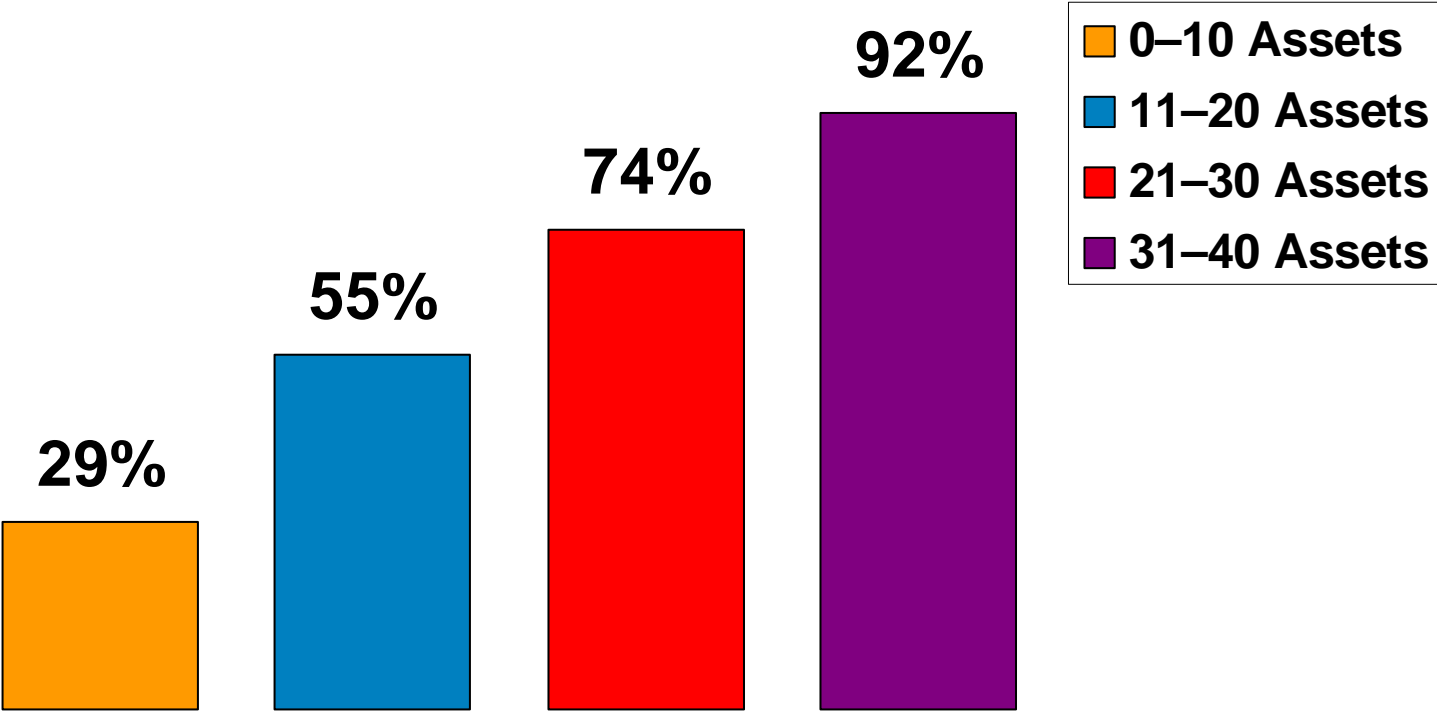
The Power of Assets to Promote: Exhibiting Leadership

(from Table 16 of your Full Report)



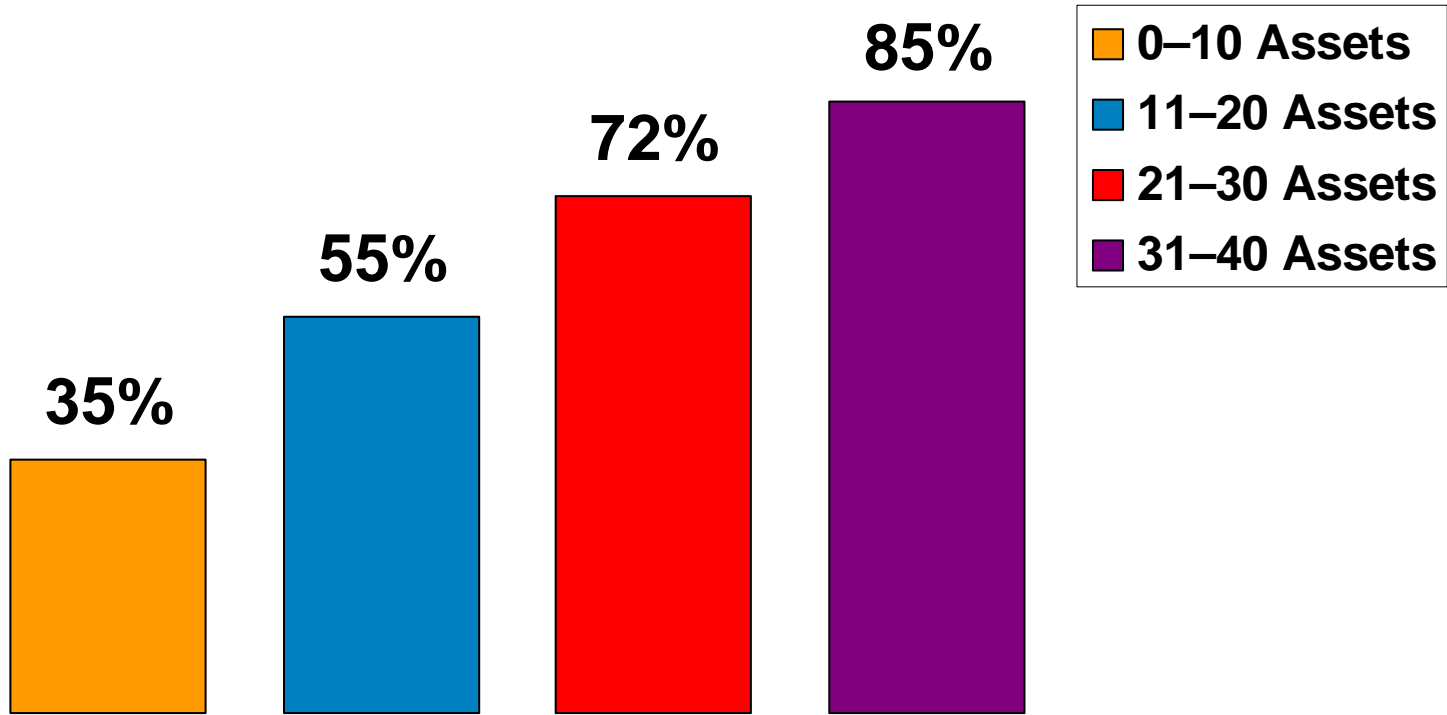
The Power of Assets to Promote: Maintaining Good Health

(from Table 16 of your Full Report)



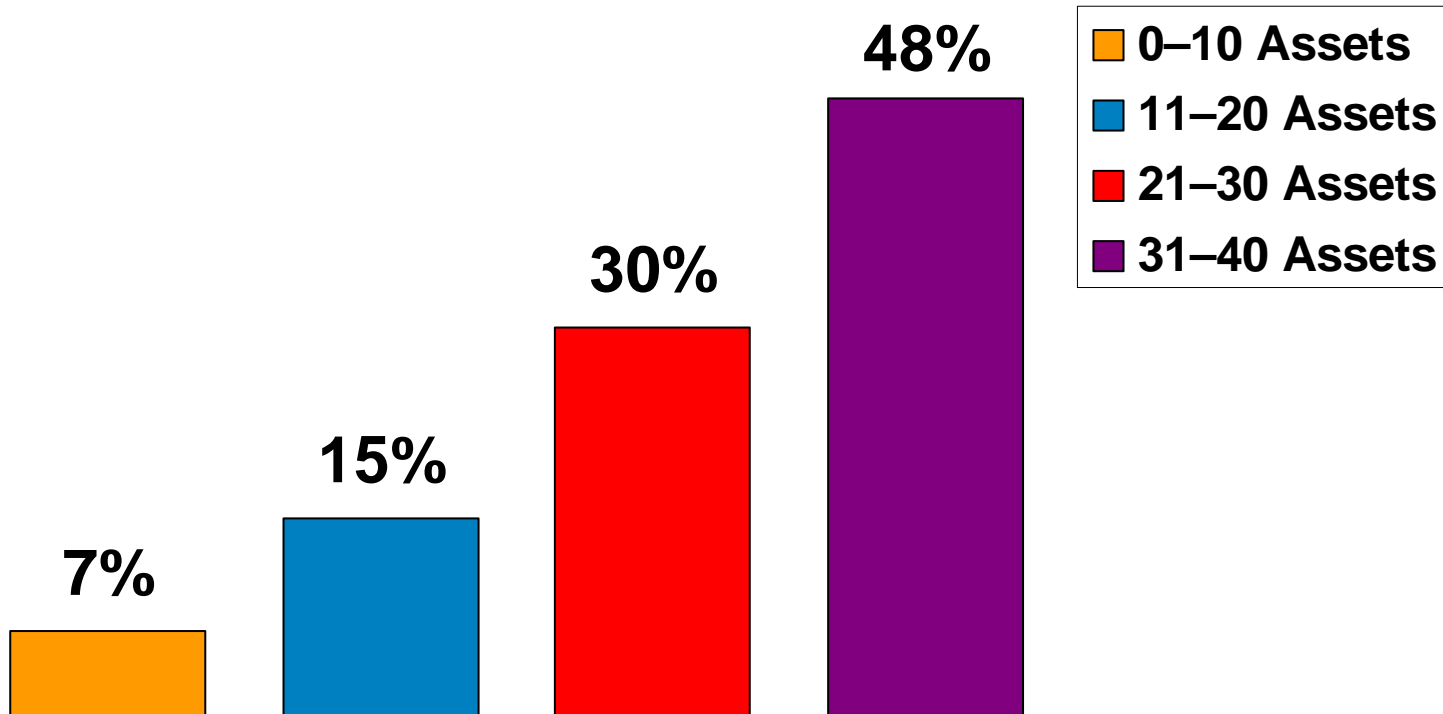
The Power of Assets to Promote: Valuing Diversity

(from Table 16 of your Full Report)



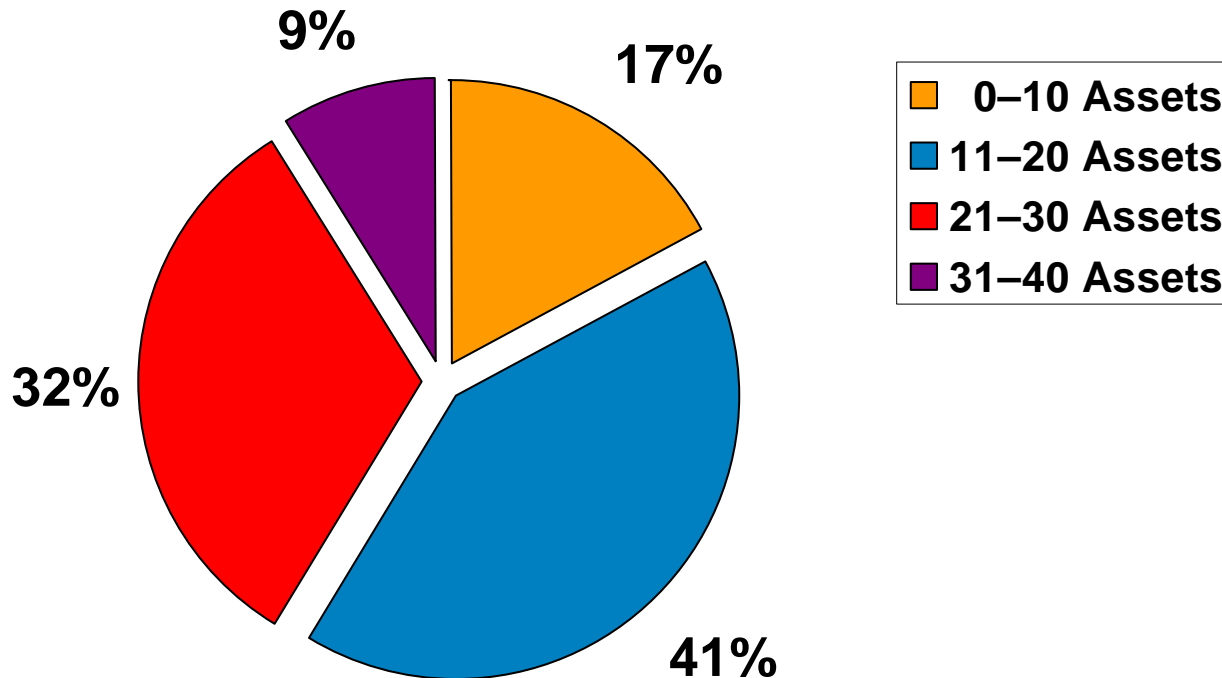
The Power of Assets to Promote: Succeeding in School

(from Table 16 of your Full Report)



The Challenge Facing Your Community

(Figure 16 from your Full Report)



The Five Action Strategies

